



## M/Y TAMTEEN



**LOCATION:** Lebanon

**ASKING PRICE:** USD 4 200 000

---

Any yachts offered are subject to availability.  
Particulars are believed correct but are not guaranteed, neither may they be used for contractual purposes.  
All business is conducted in accordance with our Terms of Business – copy available on request.

---



---

**MONACO**  
+377 9770 5200

**FORT LAUDERDALE**  
+1 954 271 5165

**LONDON**  
+44 203 795 2690

**TOKYO**  
+81 3 6447 7154

[info@yacht-zoo.com](mailto:info@yacht-zoo.com) | [www.yacht-zoo.com](http://www.yacht-zoo.com)



TYPE:	M/Y
FLAG:	Cayman Islands
SHIPYARD:	TRIDENT SHIPWORKS
EXTERIOR DESIGNER:	Baglietto and Paszkowski
INTERIOR DESIGNER:	Trident / Melody Savio
BUILD:	1998
REFIT:	2013
LENGTH OVERALL:	38.71 m / 127 ft
BEAM:	7.32 m / 24.02 ft
DRAFT:	1.83 m / 6 ft
GROSS TONNAGE:	293
HULL MATERIAL:	Fiberglass
SUPERSTRUCTURE:	Teak and Fiberglass
ENGINES:	2 x MTU 16V 396TE, 3040hp
MAX SPEED:	30 kt
CRUISE SPEED:	19 kt
RANGE:	1800 nm
ACCOMMODATION:	10 guests in 5 staterooms, 4 crew

## OVERVIEW

Built 1998 by Trident Shipworks US  
GRT/NRT 293/87

---

MONACO  
+377 9770 5200

FORT LAUDERDALE  
+1 954 271 5165

LONDON  
+44 203 795 2690

TOKYO  
+81 3 6447 7154

[info@yacht-zoo.com](mailto:info@yacht-zoo.com) | [www.yacht-zoo.com](http://www.yacht-zoo.com)



Length 127' ft 38.70 m breadth 25' ft 7.62 m  
Engines 2 MTU 16v 396te 3040 hp each  
W5 service performed for main engines at 3000 running hours according to the Manufacturer maintenance manual, the work carried out by MTU company Istanbul Turkey on August 2013.  
2 x Kilo Pak 55kW original hours 6233/6245  
Propulsion water jet (Kamewa)  
Generators Kilopak 2x55 kw each  
Cruising consumption 1100 liters per hour // economy speed at 12 knts = 450 liters per hour  
Fuel tank capacity 8200 gallons / 31000 liters  
Stabilizer type NAIAD 404  
Atlas converter  
Aqua Air 20 ton air conditioning  
65-horsepower American bow thruster  
1500 gal/day Watermakers unit

## ACCOMMODATION

Tamteen was designed with accommodations for a capacity of 10 guests.  
She also has the ability to accommodate up to 4 yacht crew onboard to ensure the relaxed luxury yacht vacation feel.

## COMMUNICATIONS AND NAVIGATIONAL EQUIPMENT

RADAR 2 fitted new 2012, Furuno, ARPA 96 miles and a Simrad RA 7114-CA 90 miles  
Mf/hf telephone1  
Vhf SIMRAD 2 fitted new 2012  
GPS SIMRAD mx510 2 fitted new 2012  
Echo sounder FURUNO fcv 582 (1)  
Camera forward/aft/and engine room (3)  
RGM controlling tanks/cabins and machinery (1)  
OPTEC X MORSE doors security control (1)  
B&G hydra (2)  
Satellite earth station fleet (1)  
Satellite earth station mini m (1)  
TV Satellite kvh g8  
Electronic chart plotter (2) Simrad CP54 with Nobeltec version 6  
Fire system Monitor is Fire.lite alarm inc MS-9200

## TENDERS AND TOYS

Jet ski Yamaha 1200 hp each (2)  
Tender Novurania 5.5m with 50 hp outboard (1)



## OTHERS

### UPGRADES/SERVICE WORKS

The Main Salon has been completely renewed. The bar was removed and all the furniture was changed including the floor carpet and roof leather under BUREAU VERITAS supervision on Dec. 2008.

Removed the forward dining room and built a new guest cabin under BUREAU VERITAS supervision on Dec. 2008.

Sky lounge salon floor carpet and roof leather changed under BUREAU VERITAS supervision on Dec. 2008.

W5 service performed for main engines at 3000 running hours according to the Manufacturer maintenance manual, the work carried out by MTU company Istanbul Turkey on August 2013.

Last dry dock was done from 08/07/2015 till 13/07/2015 at La Marina Dbayeh Lebanon.

The following work was carried out:

Inspected the bottom and jet, scraping and high pressure water, lowered the anchors and chains on the dock inspected and painted as necessary, changed 3 hydraulic hoses for jet steering and reverse, painted the bottom with 1 coat fiber primer and 2 coats antifouling, replaced the zinc anodes on the bottom and jet.

Last service of jet done in Lebanon in summer of 2005 it was completely overhauled. The overhaul was attended by Switzerland supervisor engineer. They changed every part that was recommended.

---

This document is not contractual. All specifications are given in good faith and offered for informational purposes only. YACHTZOO does not warrant or assume any legal liability for the accuracy, completeness or usefulness of any information displayed. Yacht availability, inventory, specifications and prices are subject to change without prior notice.

Any reproduction of the contents of this document for advertising in any medium in part or in its entirety is strictly forbidden without YACHTZOO's prior written consent.



---

**MONACO**  
+377 9770 5200

**FORT LAUDERDALE**  
+1 954 271 5165

**LONDON**  
+44 203 795 2690

**TOKYO**  
+81 3 6447 7154

[info@yacht-zoo.com](mailto:info@yacht-zoo.com) | [www.yacht-zoo.com](http://www.yacht-zoo.com)



**MONACO**  
+377 9770 5200

**FORT LAUDERDALE**  
+1 954 271 5165

**LONDON**  
+44 203 795 2690

**TOKYO**  
+81 3 6447 7154

[info@yacht-zoo.com](mailto:info@yacht-zoo.com) | [www.yacht-zoo.com](http://www.yacht-zoo.com)





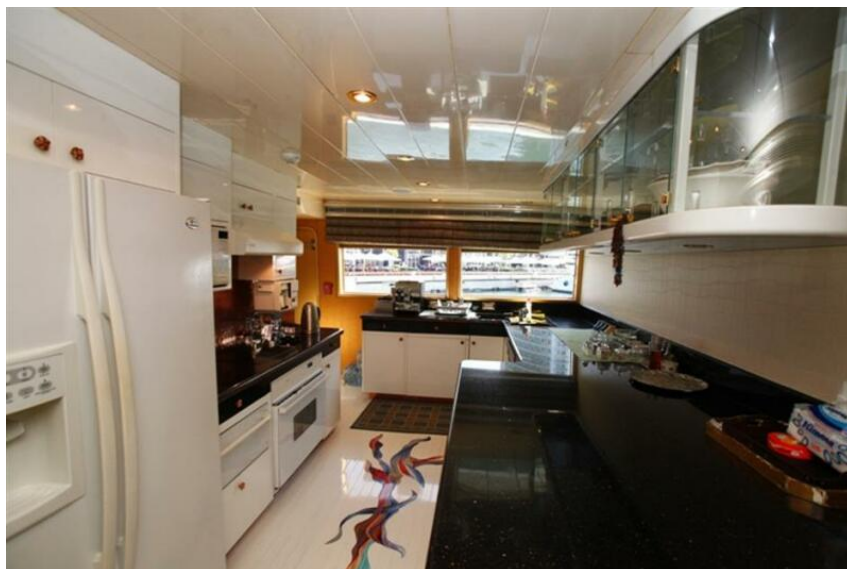
**MONACO**  
+377 9770 5200

**FORT LAUDERDALE**  
+1 954 271 5165

**LONDON**  
+44 203 795 2690

**TOKYO**  
+81 3 6447 7154

[info@yacht-zoo.com](mailto:info@yacht-zoo.com) | [www.yacht-zoo.com](http://www.yacht-zoo.com)



---

**MONACO**  
+377 9770 5200

**FORT LAUDERDALE**  
+1 954 271 5165

**LONDON**  
+44 203 795 2690

**TOKYO**  
+81 3 6447 7154

[info@yacht-zoo.com](mailto:info@yacht-zoo.com) | [www.yacht-zoo.com](http://www.yacht-zoo.com)





---

**MONACO**  
+377 9770 5200

**FORT LAUDERDALE**  
+1 954 271 5165

**LONDON**  
+44 203 795 2690

**TOKYO**  
+81 3 6447 7154

[info@yacht-zoo.com](mailto:info@yacht-zoo.com) | [www.yacht-zoo.com](http://www.yacht-zoo.com)



---

**MONACO**  
+377 9770 5200

**FORT LAUDERDALE**  
+1 954 271 5165

**LONDON**  
+44 203 795 2690

**TOKYO**  
+81 3 6447 7154

[info@yacht-zoo.com](mailto:info@yacht-zoo.com) | [www.yacht-zoo.com](http://www.yacht-zoo.com)



**MONACO**  
+377 9770 5200

**FORT LAUDERDALE**  
+1 954 271 5165

**LONDON**  
+44 203 795 2690

**TOKYO**  
+81 3 6447 7154

[info@yacht-zoo.com](mailto:info@yacht-zoo.com) | [www.yacht-zoo.com](http://www.yacht-zoo.com)



**MONACO**  
+377 9770 5200

**FORT LAUDERDALE**  
+1 954 271 5165

**LONDON**  
+44 203 795 2690

**TOKYO**  
+81 3 6447 7154

[info@yacht-zoo.com](mailto:info@yacht-zoo.com) | [www.yacht-zoo.com](http://www.yacht-zoo.com)





---

**MONACO**  
+377 9770 5200

**FORT LAUDERDALE**  
+1 954 271 5165

**LONDON**  
+44 203 795 2690

**TOKYO**  
+81 3 6447 7154

[info@yacht-zoo.com](mailto:info@yacht-zoo.com) | [www.yacht-zoo.com](http://www.yacht-zoo.com)





---

**MONACO**  
+377 9770 5200

**FORT LAUDERDALE**  
+1 954 271 5165

**LONDON**  
+44 203 795 2690

**TOKYO**  
+81 3 6447 7154

[info@yacht-zoo.com](mailto:info@yacht-zoo.com) | [www.yacht-zoo.com](http://www.yacht-zoo.com)



**MONACO**  
+377 9770 5200

**FORT LAUDERDALE**  
+1 954 271 5165

**LONDON**  
+44 203 795 2690

**TOKYO**  
+81 3 6447 7154

[info@yacht-zoo.com](mailto:info@yacht-zoo.com) | [www.yacht-zoo.com](http://www.yacht-zoo.com)



---

**MONACO**  
+377 9770 5200

**FORT LAUDERDALE**  
+1 954 271 5165

**LONDON**  
+44 203 795 2690

**TOKYO**  
+81 3 6447 7154

[info@yacht-zoo.com](mailto:info@yacht-zoo.com) | [www.yacht-zoo.com](http://www.yacht-zoo.com)





---

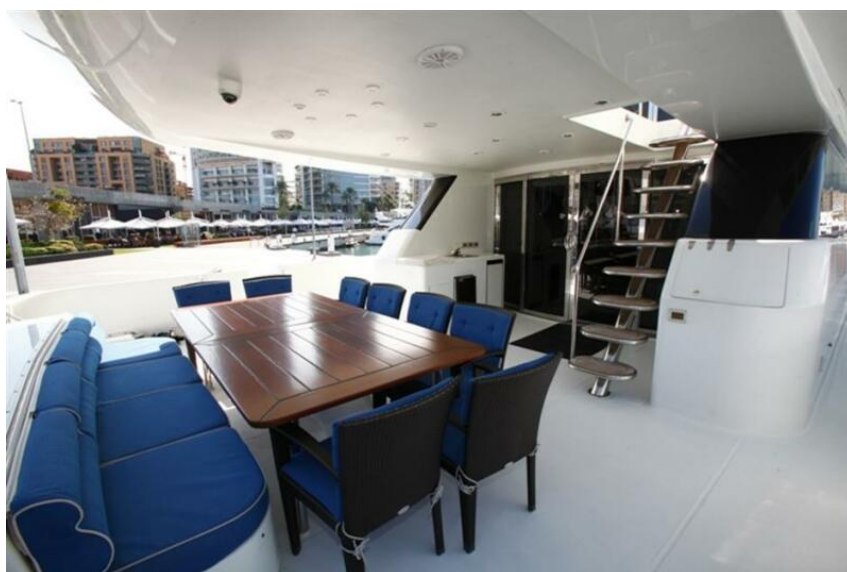
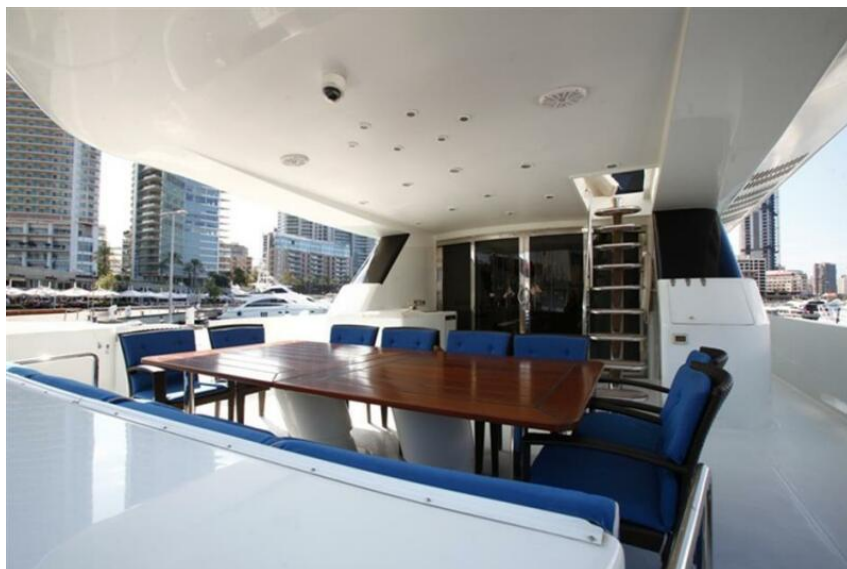
**MONACO**  
+377 9770 5200

**FORT LAUDERDALE**  
+1 954 271 5165

**LONDON**  
+44 203 795 2690

**TOKYO**  
+81 3 6447 7154

[info@yacht-zoo.com](mailto:info@yacht-zoo.com) | [www.yacht-zoo.com](http://www.yacht-zoo.com)



**MONACO**  
+377 9770 5200

**FORT LAUDERDALE**  
+1 954 271 5165

**LONDON**  
+44 203 795 2690

**TOKYO**  
+81 3 6447 7154

[info@yacht-zoo.com](mailto:info@yacht-zoo.com) | [www.yacht-zoo.com](http://www.yacht-zoo.com)





---

**MONACO**  
+377 9770 5200

**FORT LAUDERDALE**  
+1 954 271 5165

**LONDON**  
+44 203 795 2690

**TOKYO**  
+81 3 6447 7154

[info@yacht-zoo.com](mailto:info@yacht-zoo.com) | [www.yacht-zoo.com](http://www.yacht-zoo.com)



**MONACO**  
+377 9770 5200

**FORT LAUDERDALE**  
+1 954 271 5165

**LONDON**  
+44 203 795 2690

**TOKYO**  
+81 3 6447 7154

[info@yacht-zoo.com](mailto:info@yacht-zoo.com) | [www.yacht-zoo.com](http://www.yacht-zoo.com)