



M/Y COR d. ROVER 62



LOCATION: The Netherlands

ASKING PRICE: EUR 1 400 000

TAX STATUS: VAT Not paid

Any yachts offered are subject to availability.
Particulars are believed correct but are not guaranteed, neither may they be used for contractual purposes.
All business is conducted in accordance with our Terms of Business - copy available on request.

IYBA
INTERNATIONAL YACHT
BROKERS ASSOCIATION
FORMERLY FLORIDA YACHT BROKERS ASSOCIATION



MONACO
+377 9770 5200

FORT LAUDERDALE
+1 954 271 5165

LONDON
+44 203 795 2690

TOKYO
+81 3 6447 7154

info@yacht-zoo.com | www.yacht-zoo.com



TYPE:	M/Y
SHIPYARD:	Jetten
MODEL:	2018
EXTERIOR DESIGNER:	Cor D Rover
NAVAL ARCHITECT:	Van Oossanen
DELIVERY:	2020
LENGTH OVERALL:	19.3 m / 63.32 ft
BEAM:	5 m / 16.4 ft
DRAFT:	1.36 m / 4.46 ft
DISPLACEMENT:	35 t
HULL MATERIAL:	Aluminium
CLASS:	CE norm A
ENGINES:	2 x Cummins 550hp
MAX SPEED:	21.5 kt
RANGE:	1800 nm
ACCOMMODATION:	6 guests in 3 cabins

COMMENTS

The Jetten Beach 62 redefines the modern motor yacht. She is a brand new modern Dutch design full of interesting panoramic views. Designed by Cor D. Rover she is bright, light and open with a "Sinot like" interior design feel and finish. Naval architecture by van Oossanen with FDHF hull design topped off with a hull vane, Seakeeper 9 and automatic humphree interceptors for maximum stabilizing efficiency. Her speed and comfort are unprecedented giving her great economical consumption for her size. The Jetten Beach 62 is equipped with state of the art electronics and navigation that allows you to control her from



anywhere.

- Launched in 2020
- Never used
- 2-year technical support
- Replacement cost quoted @ 3.2 Million euros
- She is the first FDHF Hull with Hull Vane in this class, improving the fuel efficiency for this size vessel
- Full of innovative options

CONSTRUCTION

Headroom (m) 2,05
Year built 2018
Launched 2020 and never cruised since
Hull colour white
Hull shape with hull vane Fast Displacement Hull
Keel type box keel
Superstructure material aluminium
Rubbing strake stainless steel
Deck material aluminium
Deck finish teak imitation
Superstructure deck finish paint
Cockpit deck finish teak imitation
Antifouling (year) 2018
Window material Fluss Glued windows
tempered glass
Portholes
Insulation airfoil
Radar arch

ACCOMMODATION

Cabins 3 - Berths 6
Interior Modern walnut
Layout Custom
Floor parquet
Aft deck
Pilot house
Saloon With L-shaped sofa
Sliding roof king size, electric
Largest webasto custom ever built

MONACO
+377 9770 5200

FORT LAUDERDALE
+1 954 271 5165

LONDON
+44 203 795 2690

TOKYO
+81 3 6447 7154



Kabola central heating
Air-conditioning in each cabin reverse cycle airco
Navigation center
Aft Cabin
Dining room With a large U-shaped sofa
Opening door to aft deck fully opening folding

Owners cabin

Full beam with a desk and a panoramic view
French bed
Bed length (m) 2,05 x 1,80
Wardrobe hanging/drawers/shelves
Bathroom en suite
Toilet en suite
Toilet system electric
Wash basin in the bathroom
Shower en suite

Guest cabin 1

French bed
Bed length (m) 2,03 x 1,60
Wardrobe hanging/drawers/shelves
Bathroom shared
Toilet separate
Toilet system electric
Wash basin in the bathroom
Shower shared

Guest cabin 2 - Option to convert to Captain's cabin

Guest/conversiontwin single
Bed length (m) 2,00 x 70
Wardrobe hanging and shelves
Bathroom shared
Toilet shared
Toilet system electric
Wash basin in the bathroom
Shower shared

CAPACITIES

Fuel tank (litre) 4040 aluminium



Fuel tank 2 (litre) aluminium
Level indicator (fuel tank)
Freshwater tank (litre) 820
Level indicator (freshwater)
Blackwater tank (litre)
Level indicator (blackwater)
Blackwater tank extraction deck extraction + pump
Greywater tank (litre) 370
Level indicator (greywater)

COMMUNICATIONS AND NAVIGATIONAL EQUIPMENT

Electric compass Raymarine
Depth sounder Raymarine
TracVision ball Raymarine
Log Raymarine
Repeater Raymarine
VHF 2 x Raymarine
Autopilot Raymarine
Rudder angle indicator Raymarine
Radar Raymarine
GPS Raymarine
Plotter Raymarine
Radar/GPS/plotter 2 x Raymarine Glass Bridge
Personal computer fully remote controlled system
Wifi antenna
Electronic chart
AIS transponder Raymarine
Camera Raymarine
Navigation lights
All functions can also be controlled by mobile phone and tablet

MECHANICAL, PROPULSION AND ENGINE ROOM EQUIPMENT

No of engines 2
Make Cummins
Type QSB6.7
HP 550
kW 404,25
Fuel diesel
Year installed 2018
Maximum speed (kn) 21,5



Cruising speed (kn) 10-18
Consumption (l/hr) 60
Engine hours 100
Engine cooling system freshwater heat exchanger
Drive shaft
Shaft seal
Engine controls electrical
Gearbox hydraulic
Bowthruster proportional electric
Sternthruster proportional electric
Propeller type fixed
Propeller blades 5
Propeller shaft material stainless steel
Shaft lubrication water
Manual bilge pump
Electric bilge pump 3 x automatic
Bilge alarm
Electrical installation 12 & 24 V DC & 240 V. AC
Generator Onan
Batteries Lityumion
Start battery
Service battery
Generator battery
Bowthruster battery
Sternthruster battery
Battery monitor
Battery charger
Inverter
Battery charger/inverter 3 x Mass combi ultra 24/3500-100
Diode battery combiners
Shorepower with cable
Insulation transformer
Stabilizers Seakeeper 9 - zero-speed and humphree
Automatic interceptors
Trimtabs active Humphree
Wheel steering powersteer
Inside helm position
Emergency tiller

MONACO
+377 9770 5200

FORT LAUDERDALE
+1 954 271 5165

LONDON
+44 203 795 2690

TOKYO
+81 3 6447 7154



GALLEY, DOMESTIC AND LAUNDRY EQUIPMENT

Galley U-shaped and modern
Countertop corian
Sink double
Cooker Miele 4 hub induction
Oven Miele
Extractor Miele
Microwave/oven combi Miele
Fridge Miele
Freezer Miele
Wine cooler Miele
Hot water system 220V or central heating
Water pressure system electrical
Dishwasher Miele
Kettle
Ice maker
Coffee maker
Washing machine Miele
Dryer Miele
Wet bar with Grill, sink, locker space and fridge on SB aft deck

ENTERTAINMENT EQUIPMENT

TV
TV receiver
Radio-cd player
DVD player
iPod connection
Cockpit speakers
Speakers in salon
Speakers in cabin

DECK EQUIPMENT

Cockpit cover
Bimini
Retractable sunroof
Cockpit cushions
Cockpit table
Cockpit chairs
Bathing platform Transformer tender launch system (up to 500kg tender)
Boarding ladder stainless steel



Transom door
Deck shower
Anchor Bruce
Anchor chain
Windlass electrical
Sea railing
Grab rail (superstructure) stainless steel
Railing side opening gates
Pushpit
Pulpit
Wiper 3 x
Fenders
Mooring lines
Spare parts

OTHER EQUIPMENT

Tools
Fire extinguisher
Extinguisher in engine room

This document is not contractual. All specifications are given in good faith and offered for informational purposes only. YACHTZOO does not warrant or assume any legal liability for the accuracy, completeness or usefulness of any information displayed. Yacht availability, inventory, specifications and prices are subject to change without prior notice.

Any reproduction of the contents of this document for advertising in any medium in part or in its entirety is strictly forbidden without YACHTZOO's prior written consent.

MONACO
+377 9770 5200

FORT LAUDERDALE
+1 954 271 5165

LONDON
+44 203 795 2690

TOKYO
+81 3 6447 7154



MONACO
+377 9770 5200

FORT LAUDERDALE
+1 954 271 5165

LONDON
+44 203 795 2690

TOKYO
+81 3 6447 7154

info@yacht-zoo.com | www.yacht-zoo.com



MONACO
+377 9770 5200

FORT LAUDERDALE
+1 954 271 5165

LONDON
+44 203 795 2690

TOKYO
+81 3 6447 7154

info@yacht-zoo.com | www.yacht-zoo.com



MONACO
+377 9770 5200

FORT LAUDERDALE
+1 954 271 5165

LONDON
+44 203 795 2690

TOKYO
+81 3 6447 7154

info@yacht-zoo.com | www.yacht-zoo.com



MONACO
+377 9770 5200

FORT LAUDERDALE
+1 954 271 5165

LONDON
+44 203 795 2690

TOKYO
+81 3 6447 7154

info@yacht-zoo.com | www.yacht-zoo.com



MONACO
+377 9770 5200

FORT LAUDERDALE
+1 954 271 5165

LONDON
+44 203 795 2690

TOKYO
+81 3 6447 7154

info@yacht-zoo.com | www.yacht-zoo.com



MONACO
+377 9770 5200

FORT LAUDERDALE
+1 954 271 5165

LONDON
+44 203 795 2690

TOKYO
+81 3 6447 7154

info@yacht-zoo.com | www.yacht-zoo.com



MONACO
+377 9770 5200

FORT LAUDERDALE
+1 954 271 5165

LONDON
+44 203 795 2690

TOKYO
+81 3 6447 7154

info@yacht-zoo.com | www.yacht-zoo.com



MONACO
+377 9770 5200

FORT LAUDERDALE
+1 954 271 5165

LONDON
+44 203 795 2690

TOKYO
+81 3 6447 7154

info@yacht-zoo.com | www.yacht-zoo.com



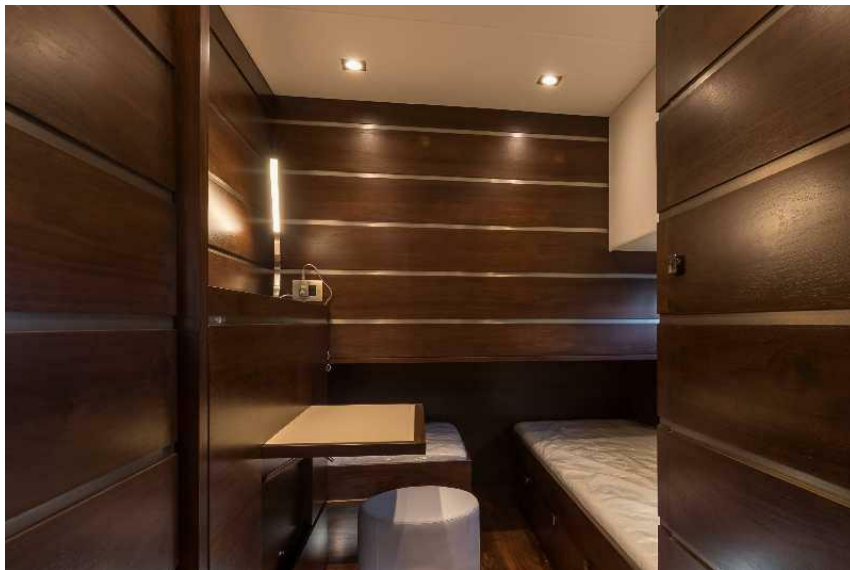
MONACO
+377 9770 5200

FORT LAUDERDALE
+1 954 271 5165

LONDON
+44 203 795 2690

TOKYO
+81 3 6447 7154

info@yacht-zoo.com | www.yacht-zoo.com



MONACO
+377 9770 5200

FORT LAUDERDALE
+1 954 271 5165

LONDON
+44 203 795 2690

TOKYO
+81 3 6447 7154

info@yacht-zoo.com | www.yacht-zoo.com



MONACO
+377 9770 5200

FORT LAUDERDALE
+1 954 271 5165

LONDON
+44 203 795 2690

TOKYO
+81 3 6447 7154

info@yacht-zoo.com | www.yacht-zoo.com



MONACO
+377 9770 5200

FORT LAUDERDALE
+1 954 271 5165

LONDON
+44 203 795 2690

TOKYO
+81 3 6447 7154

info@yacht-zoo.com | www.yacht-zoo.com



MONACO
+377 9770 5200

FORT LAUDERDALE
+1 954 271 5165

LONDON
+44 203 795 2690

TOKYO
+81 3 6447 7154

info@yacht-zoo.com | www.yacht-zoo.com



MONACO
+377 9770 5200

FORT LAUDERDALE
+1 954 271 5165

LONDON
+44 203 795 2690

TOKYO
+81 3 6447 7154

info@yacht-zoo.com | www.yacht-zoo.com



MONACO
+377 9770 5200

FORT LAUDERDALE
+1 954 271 5165

LONDON
+44 203 795 2690

TOKYO
+81 3 6447 7154

info@yacht-zoo.com | www.yacht-zoo.com



MONACO
+377 9770 5200

FORT LAUDERDALE
+1 954 271 5165

LONDON
+44 203 795 2690

TOKYO
+81 3 6447 7154

info@yacht-zoo.com | www.yacht-zoo.com



MONACO
+377 9770 5200

FORT LAUDERDALE
+1 954 271 5165

LONDON
+44 203 795 2690

TOKYO
+81 3 6447 7154

info@yacht-zoo.com | www.yacht-zoo.com



MONACO
+377 9770 5200

FORT LAUDERDALE
+1 954 271 5165

LONDON
+44 203 795 2690

TOKYO
+81 3 6447 7154

info@yacht-zoo.com | www.yacht-zoo.com



MONACO
+377 9770 5200

FORT LAUDERDALE
+1 954 271 5165

LONDON
+44 203 795 2690

TOKYO
+81 3 6447 7154

info@yacht-zoo.com | www.yacht-zoo.com



MONACO
+377 9770 5200

FORT LAUDERDALE
+1 954 271 5165

LONDON
+44 203 795 2690

TOKYO
+81 3 6447 7154

info@yacht-zoo.com | www.yacht-zoo.com



MONACO
+377 9770 5200

FORT LAUDERDALE
+1 954 271 5165

LONDON
+44 203 795 2690

TOKYO
+81 3 6447 7154

info@yacht-zoo.com | www.yacht-zoo.com