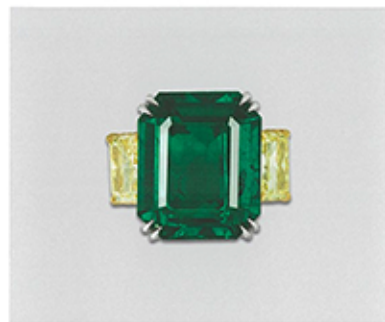
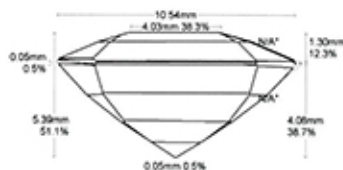


AGL



Images do not accurately portray size or color.

Accu-Vu™ Imaging:



Comments:

Imaging

Document No: CS 1074896

Validation Date: 25 April 2016

Identification

Mineral Type: Natural Beryl
Variety: Emerald

Color Description: Green

Carat Weight: 23.43 cts
Measurements: 20.28 x 16.94 x 9.22 mm

Shape: Rectangular
Cutting Style: Emerald Cut

Comments: Set in a white and yellow metal ring with two yellow diamonds (not tested) and numerous round diamonds (identified at random). Tested prior to mounting.

Identification

Origin

Provenance: Zambia

Comments: Based on available gemological information, it is the opinion of the Laboratory that the origin of this material would be classified as Zambia.



Origin

Enhancement

Standard: Clarity enhancement: None
Degree: N/A
Type: N/A
Stability Index: N/A

Additional: None
Degree: N/A
Type: N/A
Stability Index: N/A

Comments: Non-clarity enhanced emeralds are rare. Emeralds are commonly clarity enhanced to reduce the visibility of fissures. N/A represents Not Applicable

Enhancement

1	2	3	4	5	6	7	8	9	10
Excellent	Very Good	Good	Fair	Poor					

Enhancement Stability Index™

None	Insignificant	Minor	Moderate	Strong	Prominent
Extremely Rare	Very Rare	Rare	Uncommon	Common	Very Common

Degree of Clarity Enhancement & Relative Rarity™

Christopher P. Smith, President



American Gemological Laboratories™
America's first and most highly respected origin lab.

Founded in 1977,
AGL is an internationally recognized gemstone
testing facility, specializing in comprehensive
colored stone analyses.

AGL has the distinction of being the
first laboratory in the United States to issue
Country-of-Origin reports. Our company and its
principals have a long tradition of research into the
detection of and reporting on gem identification-
and-classification, gemstone treatments and
provenance determinations.

Our staff is composed of experts in the field
of gemstone testing and reporting. Our findings
reflect the latest knowledge and analytical
techniques to ensure the highest standards
are applied on every stone we test.

AGL's testing and reporting
methodology provide you with unsurpassed quality
and reliability. We are committed to providing
the highest level of service and reporting
that our clients and the industry have
come to expect from the AGL.



CS 1074896
Zambian Emerald & Diamond Ring by TAKAT
23.43 ct Emerald

25 April 2016

Natural Emerald and Diamond ring by Takat,
Weight: 23.43 Cts.
Reference: CS 1074896

To whom it may concern,

Emerald is one of the world's most cherished gems. Its verdant green tones have been coveted for more than two millennia since emanating from the land of the Pharaohs. Global sales make it one of the world's top three-colored stones, along with ruby and sapphire. Legends of intrigue have surrounded the stone since the times of Cleopatra and the emperors of Rome. As an ancient talisman, emerald was believed to bring luck and fortune. Later, as it became revered as a symbol of romance and devotion, the gemstone inspired the creation of exquisite pieces of jewelry throughout history.

Although Egypt was the first known source of emeralds, the South American region that became known as Colombia has been considered the source of the finest emeralds since they were first brought back to Europe and then on to India by Spanish and Portuguese conquistadors in the 16th century. However, a number of countries around the world produce emeralds, including Afghanistan, Brazil, Madagascar, Nigeria, Russia, Tanzania, Zambia and Zimbabwe, as well as others. The majority of these nations do not have significant reserves of fine gem-quality emeralds. The central African nation of Zambia, however, stands out in stark contrast to the rest.

Emeralds were first discovered in Zambia in 1928, although commercial production from the Kafubu area of North-Central Zambia did not start to take place until the 1980's. Zambia has since become the world's second largest producer of emeralds in terms of total market value - second only to Colombia. Since their discovery, the emeralds of Zambia have become highly renown and valued for their exceptional quality and luxuriant green color.



AMERICAN GEMOLOGICAL LABORATORIES

The 23.43 ct. emerald described in the accompanying AGL Prestige report No. CS 1074896 is just one of these outstanding gems. This exceptional emerald possesses all of the quintessential characteristics that identifies a top-quality emerald originating from Zambia.

In general, the special combination of quality elements contributes favorably to the rarity and desirability of this fine gem. More specifically, this stone possesses a highly saturated color that is typical of top-quality Zambian emeralds. The color is further complemented by a fine cut and accentuated by numerous vivid internal color reflections. This gem further possesses a high clarity for an emerald, leading to a superior degree of transparency. Augmenting the importance of this material is the fact that this gem has not been clarity enhanced to improve its quality. Clarity enhancement is a common practice in emeralds and other gems to reduce the visibility of fissures and improve their apparent clarity.

In addition, its size exceeding 23 ct. places this gem in a very exclusive category of top quality, non-clarity enhanced emeralds from any deposit. Due to the extended period of time that the fabled mines of Colombia have been producing, there actually exist fewer such quality stones originating from Zambia than from Colombia.

The combination of attributes present in this 23.43 ct. Zambian gem signifies an emerald of exceptional rarity and is a tribute to the ability of nature to produce gems of outstanding beauty. In addition, this exquisite gem is mounted in a very finely crafted ring by Takat, accented by two well-matched Fancy Yellow diamonds, each weighing 3.53 ct. The combination of an outstanding, large Zambian emerald, set in a ring from one of the world's important retailers, results in a jewelry item worthy of special merit and distinction.

Sincerely,

A handwritten signature in blue ink, which appears to read "Christopher P. Smith".

Christopher P. Smith, President
American Gemological Laboratories, LLC



AMERICAN GEMOLOGICAL LABORATORIES